

Wentworth Falls Garden Club Inc.

Affiliated with The Garden Clubs of Australia Inc.

10th September 2020: Edition No 339

We acknowledge and respect the traditional custodians of this land: the Darug and Gundungurra people.

From the President.....

I have thoroughly enjoyed my three years as President of Wentworth Falls Garden Club. It is now time to hand over the reins and I wish Janice Light, our new President, and the rest of the committee, best wishes for the future running of the club.

Due to the COVID-19 restrictions, we are currently allowed only 52 people in the School of Arts Hall for a meeting. As we usually have between 70 and 80 members per meeting this requirement is unrealistic for us. We are unable to have a self-serve style morning tea and the hall cleaning requirements are onerous. Therefore, the Committee is not expecting us to be able to hold a General Meeting until January 2021 at the earliest unless circumstances change before then.

Best wishes to all members. I look forward to seeing many of you at the October Ramble.
Happy Gardening!

Carol

Garden Ramble 8th October

Session 1 10:30 – 11:30

Session 2 11:30 – 12:30

To avoid overcrowding please call Carol Conway on the number in the email/letter to register which session you will attend.

There will be a Plant Stall so please bring any items for sale. You may also purchase some of the donated books from the Book Stall.

Many thanks go to Geraldine and Peter Sternberg for hosting the Garden Ramble. The address can be found in the accompanying email/letter.

Membership Renewal Now Due

Special COVID-19 rate of ONLY \$10.00

Payments can be deposited to the Wentworth Falls Garden Club Account online or at any bank:

BSB: 062-559

Acct: 28003852.

Ensure your name is included as identification. Cheques should be made payable to Wentworth Falls Garden Club and deposited at any bank or posted to the address in the email. Badges will be distributed at the October 8th Ramble or held until we next meet.



Merino Magic orders being taken NOW. Call Henry. See details in email.

WELFARE.

Thank-you card received from Peter Shoemark and family. Get Well card sent to Irma Mahling.

Lea

Please continue to contact Lea on 4784 1101 for welfare matters.

Treasurer's Report Summary August 2020

Available Funds at 1st Aug	\$3,933.12
Plus Monthly Income	\$527.27
Minus Monthly expenditure	\$247.58
Available Funds at 31st August	\$4,212.81
The full reports are available here	

The 2020 Collectors' Plant Fair has been cancelled.

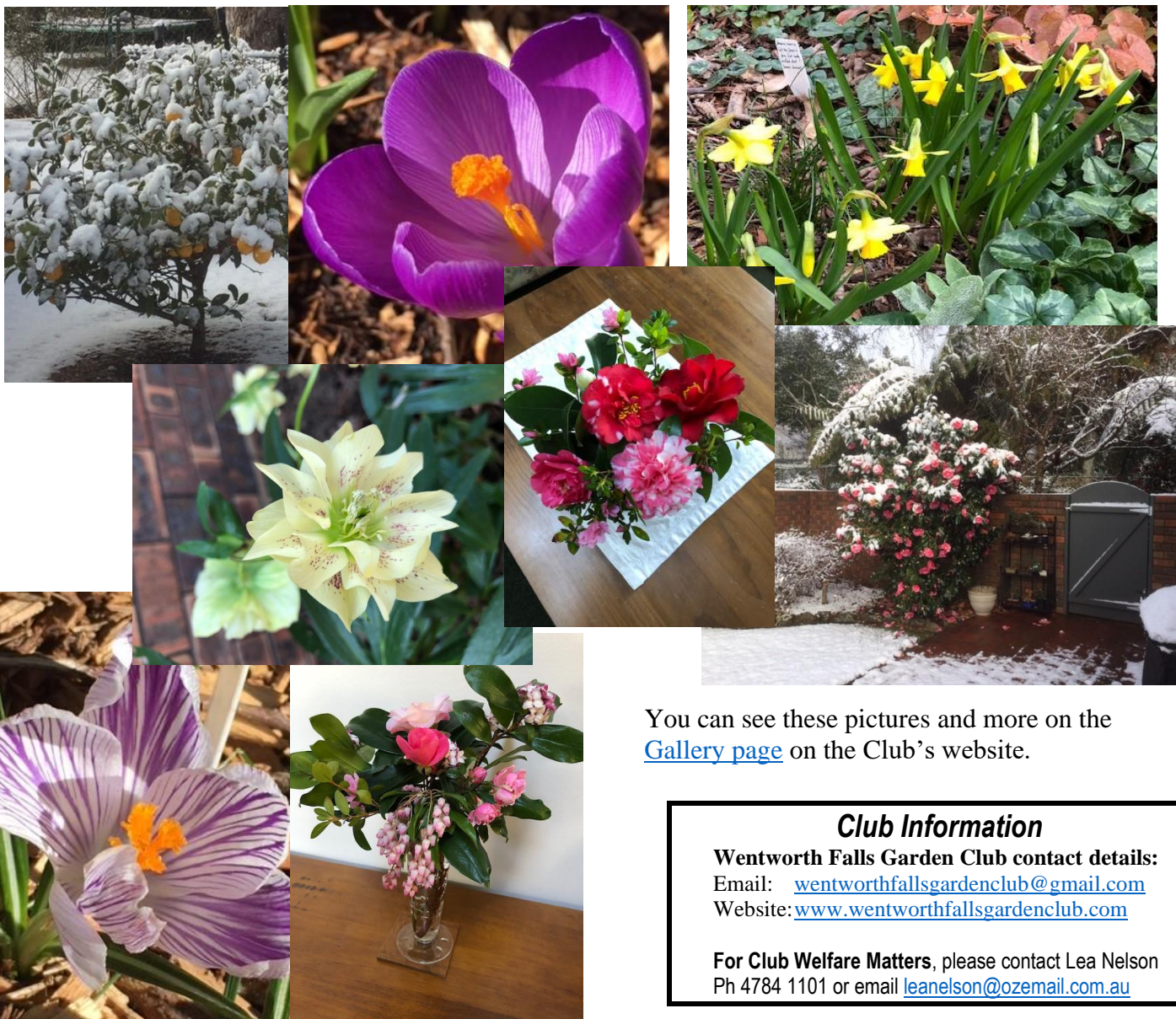
My Winter/Sprinter Garden – Carol Conway

According to Tim Entwisle in his book *Sprinter and Sprummer – Australia's Changing Seasons*, the inexorable creep of spring means he considers June and July to be our winter months, and August/September to be early spring. The book is in our club library and makes for interesting reading. Regardless of what names they have, the seasons march on and my garden is slowly becoming more colourful as each year passes.

Moving to Leura eight years ago, I have been trying to create my own version of a Mountains garden ever since. It already had good bones but too many trees, so some had to go. The golden elm was a keeper, though the area beneath was barren. It took a while, but I dug up the compacted ground, improved the soil and each autumn the leaf-fall provides welcome compost. Islands of epimediums and heucheras and a green border of leaves of the mini cyclamen that flower in summer, frame what comes next.

The first flowers to appear are the delicate galanthus. I now have several different varieties that flower from late June through to August. Every flower is a new plant next year and I am aiming for a snowdrift of white eventually. Cowslips and primula vulgaris flower next, the common primrose, so beautiful. Mini daffodils and tete-a-tete paint a brash yellow splash among the white flowering lamiums, and hyacinths and pink daphne perfume the garden as you walk by. Purple crocuses are followed by grape hyacinths and starflowers, adding dark and pale blues to the colour palette.

White, mauve and yellow hellebores grow near a pieris and provide different hues in another part of the garden. With a backdrop of white sasanqua camellias and later the pinks, reds and variegated varieties of camellias, I am gradually achieving colour in the garden to brighten any wintry day.



You can see these pictures and more on the [Gallery page](#) on the Club's website.

Club Information

Wentworth Falls Garden Club contact details:

Email: wentworthfallsgardenclub@gmail.com

Website: www.wentworthfallsgardenclub.com

For Club Welfare Matters, please contact Lea Nelson
Ph 4784 1101 or email leanelson@ozemail.com.au

Stay Safe. Stay Healthy. Stay Apart.