

Wentworth Falls Garden Club Inc.

Affiliated with The Garden Clubs of Australia Inc.

8th April 2021: Edition No 345

We acknowledge and respect the traditional custodians of this land: the Darug and Gundungurra people.

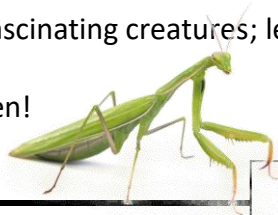
From the President.....

As I write this, I'm looking out my window and a beautiful Monarch Butterfly is fluttering by in the sunshine. I wonder where it went to when the rain pelted down over a week ago. A quick check and I find they seek shelter in umbrella-like foliage, tree hollows and under rocky outcrops, where they also go at night when at their most vulnerable. We gardeners have a lot to be thankful for with regard to the insect world and we need to encourage them to stick around.

The most popular visitors are **Bees**, excellent pollinators for producing fruit and flowers and you can easily spot them by the pollen on their legs. I used to hate **Wasps**, but understand mud wasps are large, not dangerous and carry out beneficial insect control. Before the rain, I noticed a few **Praying Mantis**, these solitary insects are camouflaged by their green or brown colouring. Have you seen many **Green Lacewing** in your garden? Leave the larvae to hatch as they do most of the pest control, feeding on aphids, mealy bugs, thrips, whitefly and more. **Persimilis or Predatory Mites** are small, reddish insects with eight legs, and again, you guessed it! They're a real asset to any garden. If you're like me you'll love **Ladybirds** and I'm sure you know they're good at controlling aphids. I was quite surprised to read that the **daddy longlegs spiders** (one I have always despised) eat spiders, earthworms, scavenge for dead insects and their eggs, also decaying plant material, and they love aphids.

Every garden has a microcosm of fascinating creatures; let's enjoy their presence and give them the respect they deserve.

We meet again in April, see you then!



Janice Light

Treasurer's Report Summary March 2021

| | |
|--|------------|
| Opening Balance at 1st Mar. | \$3,848.90 |
| plus Monthly Income | \$301.12 |
| minus Monthly Expenditure | \$562.84 |
| Closing Balance at 31 st Mar. | \$3,587.18 |

The full reports are available [here](#)



The Plant Stall will be open this Meeting.

Please label any plants you bring. Please bring your own carry bags for any plants you may purchase.

Guest Speaker Lloyd Sharp: "Growing Heritage Produce in your Mountains Garden".

Lloyd is a grower of edible heritage vegetables and herbs. He has lived in the Upper Blue Mountains for over 25 years but also has grown plants in a few other scattered locations in the wider Sydney region on both sides of the Mountains.

He grows and supplies a wide range of produce and seeds to chefs, cafes and restaurants, and to discerning individuals, looking for some of the more difficult to find tasty heirlooms. His interests include both the botanical background and cultural value of plants. 'Seed saving', including the whole process of growing through the full cycle of life from seed to seed, is a major part of this. Of significant importance are the issues of saving locally developed plant varieties and the peculiarities of growing, preparing and eating them.

Lloyd will bring some produce and seeds, and do some 'live' demonstrations with seed saving and planting. There will also be some interesting items for sale, if recent wet weather has not caused any damage.

Stay Safe. Stay Healthy. Look After Yourself.

Events to look forward to

| When | What | How Much? |
|--|--|---|
| Wednesday, 19 th May | Everglades Guided Tour with Morning Tea 10:30am. Meet at the entrance gate. | \$17.00 per person. \$7.00 if you are a National Trust Member. |
| Thursday, 17 th June | TAFE Luncheon – lovely lunch served by hospitality students. Alcohol available but not included in the price. | \$30.00 per person. |
| Wednesday, 6 th October | Mystery Garden Ramble with refreshments 10am and 11am, supporting the Blue Mountains East Timorese Sisters. | \$15.00 per person. |
| Between 27 th Sept. and 3 rd October | Leura Garden Festival Pre-Festival Tours 4 gardens. Just expressions of interest for now. | \$30.00 per person. |

Supporting Businesses in the Blue Mountains

ALL Executive and Committee positions become vacant at the AGM in July 2021. All positions are open for nomination.

If you would like to contribute further to the effective administration of the club, you are invited to nominate for either an Executive or Committee position. The Committee members meet once a month to review and discuss the operation of the club, future functions, speakers, finance and how we can best serve the members of the club. One Committee member, Ronah, will be stepping down this year and we would invite you to consider how you could join the Committee and help your club.

Please see Gai or Henry for a nomination form, or any enquiries.

Next Meeting

13th May 2021

Guest Speaker: Mary Moody.

The title of her talk is “Botanical Trekking”.

Hall Setup:

Daniel Murphy
Lea Nelson

Hall Pull Down:

Daniel Murphy
Lea Nelson

Club Information

All members and visitors are asked to sign in upon arrival. Members are asked to wear their club name badges to all club meetings, rambles and functions. To take part in club functions and rambles you must be a *bona fide* club member. General Meetings are held on the second Thursday of each month, from January to November, at the Wentworth Falls School of Arts Theatre, Adele Ave (cnr Great Western Hwy), Wentworth Falls. Check-in at 9.30am and finish around noon. The library and plant stall are open before the meeting and at morning tea. \$5 entry fee.

Joining fee is \$30. Thereafter, annual subscription is \$20 due in July each year. Payments can be direct debited to Wentworth Falls Garden Club Account: BSB: 062-559; Acct: 28003852.

Ensure your **name** and the word “Sub” is included with your remittance.

Wentworth Falls Garden Club contact details:

Email: wentworthfallsgardenclub@gmail.com

Website: www.wentworthfallsgardenclub.com

For Club Welfare matters, please contact Lea Nelson

Ph 4784 1101 or email leanelson@ozemail.com.au

WELFARE.

Card sent to Janice Light

Lea Contact details →